

ACTIVITY HUT

You will find our ACTIVITY HUT in the car park area by the lodge.

Please use any of the equipment and activities in the Hut.

You are welcome to take equipment down to your site/the lodge.

Please return and leave the hut tidy for the next group

THANK YOU 😊



ORIENTEERING COURSES

Maps and charts are in the Activity Hut

EASY - Colour coded map + 9 checkpoints,
mainly around campsites + the main
buildings

MODERATE - 13 checkpoints, using the main
features around Pettypool but NO campsites

CHALLENGING - Course 3 builds on course 2
with 20 checkpoints in the more difficult to
find areas of Pettypool

**Please consider the appropriate
level of supervision for the age group
you are working with**

Recording charts are provided
with letters to be collected
from each of the checkpoints,
these form an anagram.

HAVE FUN - The Activity team



PIONEERING

Pioneering uses your skills in useful knots such as clove hitch, round turn and two half hitches, double over hand and reef knot
But with thick rope and large poles!!

Have a go at ROPE LADDERS, SWING, TRANSPORTER BRIDGE, CAMP GATEWAYS
'A' FRAME TRANSPORTER or a basic stretcher



The Pioneering equipment store is at the side of the garage and has various lengths of poles, ropes and sacking pieces to protect the trees at Pettypool!

If you need someone to run a session please contact the PP activity team

NATURE TRAILS

Maps and charts are in the Activity Hut

New for 2015 !!

We have developed 2 NATURE TRAILS for you to enjoy

NATURE TRAIL 1-

Paths around campsites and buildings

10 information points

The Trail is based around TREES, LEAVES and BUGS!

Adults may like to read out the information - all questions are printed in green!!

START – Area of BEECH trees by the log store near the garage
FINISH – Near the toilet block on Badger site



NATURE TRAIL 2-

External Woodland area/Wild Wood

10 information points

The Trail is based around TREES, BIRDS, FUNGI and the natural woodland here at Pettypool

Adults may like to read out the information - all questions are printed in green!!

START – BIRD HIDE
FINISH – OLAVE FIELD



GEOCACHING TRAIL

**You will not require your GPS for this
GEOCACHING TRAIL!- just.....**

Trail cards/clues from the Activity Hut

**There are 16 check points around the site
Look out for the boxes hidden in some
interesting places!!**

**Please remember to sign the log book with
your UNIT NAME and DATE**

You are welcome to swop small 'keepsakes'

**Please replace the box as found ready for
the next group
THANK YOU 😊**



AERIAL RUNWAY

You will find our AERIAL RUNWAY/
ZIP WIRE in the 'Wild Wood' area!!

YOU WILL NEED TO
COLLECT THE KEY FROM
THE WARDENS CABIN or
THE LODGE BEFORE YOU
HEAD OVER!!

Please organise your
girls at the start and line
up down the steps
Please adhere to the
safety notice at the start



How about some activities whilst going down the
runway –



Carry a cup of water and wait for
the bounce at the end
Call out the name of your unit as
you go down
How about a 'run' in the dark
with a torch light on you!!
Carry a tray of beakers full of
water 😊
Sing your favourite song as you
travel down

PETTYPOOL HABITAT AREA

Welcome to our Habitat area which has been developed over the last 2 years as part of the Wildlife Connections project with Chester Zoo.

There are a number of activities to do in the Habitat area with your units.

ACTIVITIES-

1 BEE TRAIL -

This includes a number of information boards about our Bees and a trail of knitted bees to count with your units - Have fun 😊

2 WILDLIFE PHOTO TRAIL -

This is a trail around the Habitat area to find 20 laminated photos of wildlife animals - Have fun exploring 😊

3 BUG HUNTS -

Look inside the small hut by the Rainbow Ark to find all the resources you will need for a BUG HUNT-

There are white collecting trays, magnifying glasses, recording sheets, identification charts, information books and much more. Happy hunting 😊

Do not forget to record what you see in the A4 note book for other units to see

Why not make use of the benches to watch wildlife or enjoy a snack/picnic
You will also see homes for Hedgehogs, Insect Homes, Bug hotel, Bird feeders and Bird boxes.

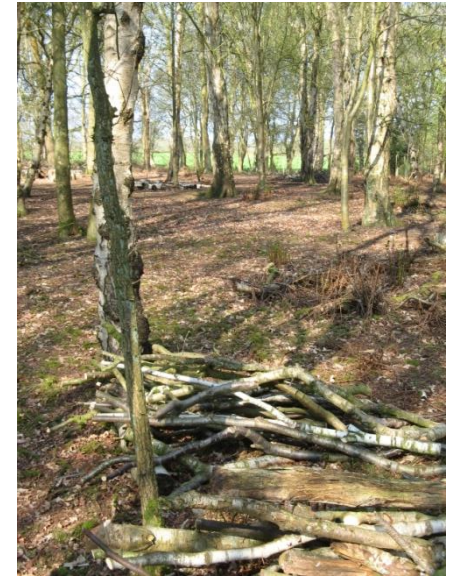
HAVE FUN EXPLORING THIS VERY SPECIAL HABITAT AREA AT PETTYPOOL



Pettypool Activity Centre

SHELTER/DEN BUILDING AREA

NEW FOR 2015!!



You will find the Shelter building area in the Wild Wood near the old Beech tree.

We have provided you with ready prepared lengths of wood of various thicknesses.

There is also a pile of 'Y/forks' for your uprights

You will find a 'large black box' containing rope and black plastic of various lengths and sizes, as well as ideas for building your shelters

PLEASE LEAVE THE AREA TIDY
FOR THE NEXT GROUP

We would be most grateful if you could add to the piles of wood - Thank you 😊



NATURAL HABITAT AREA

If you are looking for a Mini Beast hunt – then this is the area to find at Pettypool!! Situated next to the Bird Hide in the Wild Wood.



**Look out for the BUG HOTEL and other homes for the Mini Beasts-
There are magnifying glasses and collecting dishes for you
to take a 'closer look' – Have fun 😊**

BIRD HIDE

PLEASE GO QUIETLY in this area to see some of the
Bird life at Pettypool.

You are welcome to use the binoculars and information books



CAMPFIRE CIRCLE



Why not enjoy a good sing with your unit down in our campfire area



Situated down by the Clatter Bridge in wooded hollow!!



CHAPEL

Enjoy a moment of quiet and relaxation in our beautiful Woodland Chapel or a special service with others in The Great Outdoors



ENJOY THE BEAUTIFUL RHODODENDRONS, FOREST FLAME bushes and the natural rays of SUNLIGHT in our outdoor Chapel

SPACE HOPPERS + GIANT CONNECT FOUR

Suitable for young and old!!

To be found in the activity hut
and outside the Lodge

Please feel free to take these down to
your site or for our Lodge users to use
on Jubilee Green



How about team challenges,
races along a course or just for FUN!



FITNESS TRAIL

Test your skill at –

**BALANCING - HANGING UPSIDE DOWN - MOVING LIKE
A MONKEY - DO YOU HAVE A HEAD FOR HEIGHTS?**

**Then the FITNESS TRAIL is for you
BEFORE BREAKFAST! – IN THE COOL OF THE EVENING
ANY TIME OF THE DAY**

So just have a go..... 😊



ASSAULT COURSE

Suitable for girls of all ages lots of activity equipment and even a slide!



HAVE LOTS

OF FUN - 😊

CLATTER BRIDGE

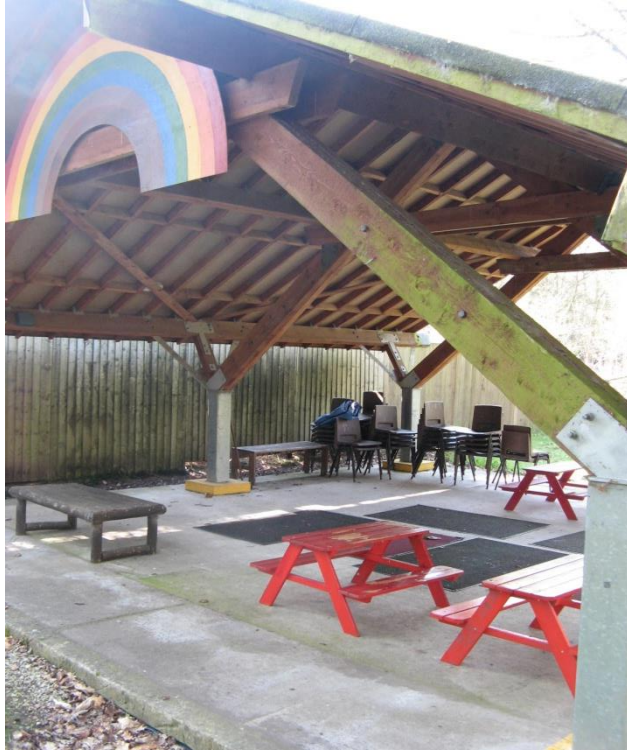
**You will find our CLATTER BRIDGE
down by the Campfire circle, it
provides a good link over to the
Bird Hide and Natural Habitat area**

**Please read the safety information
before you venture on the bridge
and remember it is 'wobbly' - 😊**

Please go with care



RAINBOW ARK



A special area for 'our Rainbows' to have fun and enjoy the sports equipment provided

It can also be used as shelter for all ages when it is wet or 'sleeping 'under the stars' or at any time!



BEECH TREE HABITAT AREA

Looking for something new to do during your visit to Pettypool whether a w/e for just an evening visit

The Beech Tree Habitat area is down by the Rainbow Ark, look out for the little gate which takes you into the area where 'the old beech tree' provides an amazing natural habitat at Pettypool.



Have fun in the Bee Zone

**How many Buzzy Bees can you find?
Learn about how bees make nature special ☺**

Follow the trail to find pictures of 20 different birds and woodland animals

Explore the BUG HOTEL for creepy crawlies ☺

Have fun doing a BUG HUNT – you will find identification charts, magnifying glasses and collecting dishes in the little hut in the Rainbow Ark area. ☺

